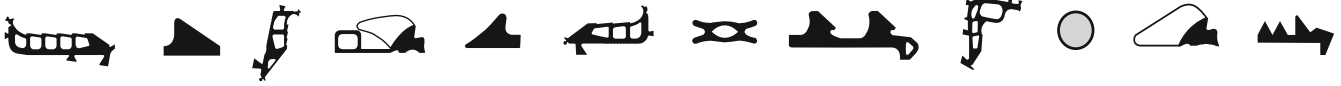


PRODUCT DATA SHEET

DS TOPSEAL BASIC



DS TOPSEAL Basic is a flat closed hose – filled with fine quartz sand – which largely levels out the unevenness of concrete manhole rings and transfers traffic and static loads on the bearing at the spigot end.

- DS TOPSEAL Basic takes over the function of the even and not springy load transfer between all manhole prefabricated components as required by DIN 4034-1.
- DS TOPSEAL Basic levels out the unevenness between manhole rings through a local movement of the fine quartz sand within the hose.
- DS TOPSEAL Basic is separately delivered to the site as a closed ring by the manufacturer of the manhole rings and then it is laid on the outer face of the spigot end before insertion (partly also pre-mounted by gluing).
- DS TOPSEAL Basic is not a seal and is only used in combination with appropriate manhole seals, for example DS SG, DS SDV-Balloon, DS BS 2000 or DS BL-S.

SPECIAL ADVANTAGES

- Levels out the permitted unevenness of manhole rings according to DIN 4034-1.
- Avoids point supports.
- Reduces peaks of pressure and increases the security of the whole construction.
- No mixing or application of mortar necessary.
- Increased efficiency through shorter mounting time.
- DS TOPSEAL Basic can be used in any weather condition.
- In case of repairs manhole rings are demountable without problems and reusable.
- Requires no changes to the concrete manhole rings..

MATERIAL

DS TOPSEAL Basic is usually produced from styrene-butadiene rubber (SBR), hardness 40+5 IRHD. The material resists the usual stresses caused by sewage.

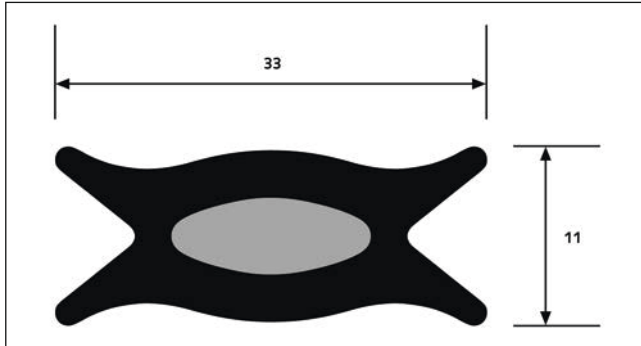
Verified statics on the overall structure and Load bearing test on Shaft rings



DIMENSIONS

DN	DN Ringdurchmesser (mm)
1000	1195
1200	1400
1500	1750
2000	2245
2500	2750

Smaller and larger DN on request.



LOAD TRANSFER BETWEEN MANHOLE RINGS

DS TOPSEAL Basic fulfils the requirements of DIN 4034-1 with regard to a proven static and connected investigation of load capacity.

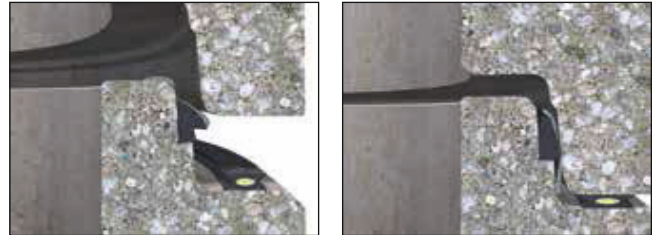
„Manholes have to be constructed under consideration of DIN EN 1610, ATV-DVWK-A 139 and ATV-DVWK-A 157. An even and not springy vertical load transfer between all manhole rings always has to be ensured. The load transfer layer has to be formed in such a way that a distance between manhole rings on the inner side of the manhole is not higher than 15 mm.“

MANHOLE RING ASSEMBLY

- Lay DS TOPSEAL Basic with its flat side approximately in the middle on the outer spigot end face
- The supplied separately sealant is applied on the spigot end or is already built into the socket of the next manhole ring. DS Lubricant is applied if the seal is not equipped with its own lubricant
- The next manhole is placed centrally and vertically hanging.

EXAMPLE

DS SDV-Balloon + DS TOPSEAL Basic



DS BS 2000 + DS TOPSEAL Basic



Values and properties shown in diagrams and tables are not subject to any guarantees. Our warranty is limited to the values and properties as required by the relevant standards. Our literature, data sheets and recommendations represent our knowledge at the time of printing but are in no way legally binding on us. Our "General Conditions of Sale" apply to all sales.